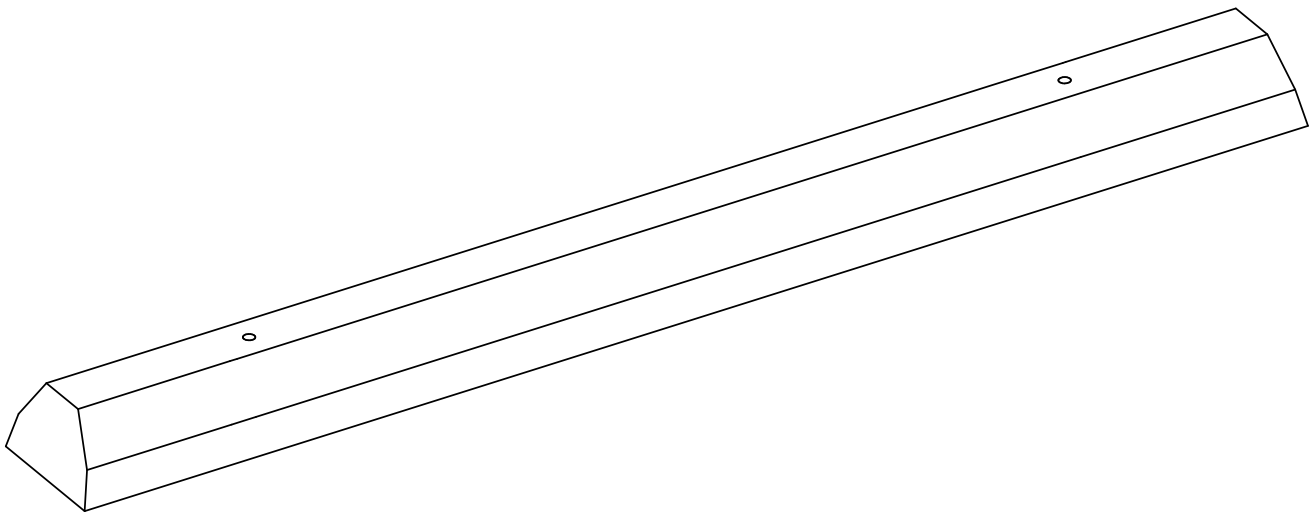


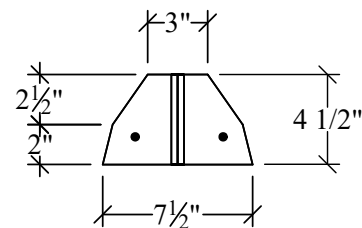
ELEVATION



WEIGHT: 150 lbs.

CONCRETE:
F_c = 4,000 psi @ 28 Days

REINFORCING:
(2) - #4 Rebar
ASTM A-615 Grade 60



SECTION

BODE'S PRECAST, INC.
1861 East Pole Rd.
Everson, Wa. 98247
(360) 354-3912

**6' Low Profile
Wheel Stop**

Model Number: WS72x7.5x4.5 - LP

Date Issued: